

SWING CHECK VALVES



SWING CHECK VALVES

SINGLE DOOR SG LOW & HIGH PRESSURE SWING CHECK VALVES

SIZES: 50 - 300mm (conform to SABS 192. CLASS 40)

SIZES: 50 - 300mm (conform to SABS 144. CLASS 10, 16, 25)

SLAMMING

Swing Check Reflux Valves are subject to slamming on rapid reversal of flow. Valve doors may be balanced by using a counter weight and lever attached to the hinge shaft. It is recommended that all sizes of high pressure reflux valves are fitted with counter weight or hydraulic dampers to regulate speed of closing.

BYPASSES

Valve sizes 200mm and larger may be fitted with bypass assemblies to drain the pipeline downstream of the main valve or in the open position, to relieve surge pressures.

TEST

SIZE	BODY	DOOR
50 - 300mm (Fig. 5-510/40)	6.4 MPa	4.0 MPa
50 - 300mm (Fig. 10/16/25)	1.6/2.5/4.0 MPa	10/16/25 MPa

SPECIFICATIONS

The illustrations on this leaflet are subject to modification without notice. Valves are rated 1.6 MPa, 2.5 MPa and 40 MPa working pressure, each valve is subjected to hydraulic pressure test on body and door, without leakage, before leaving the factory.

MATERIALS OF CONSTRUCTION (MINIMUM SPECIFICATIONS)

Body: Spheroidal Graphite Iron (SG)

Cover: SG 42 & 50

Door: SG 42 & 50

Hinge Shaft: EN 57 Stainless Steel

Seat Faces: Stainless Steel appropriate to service

Extras Available: Lever and Counterweight

HEAD LOSS

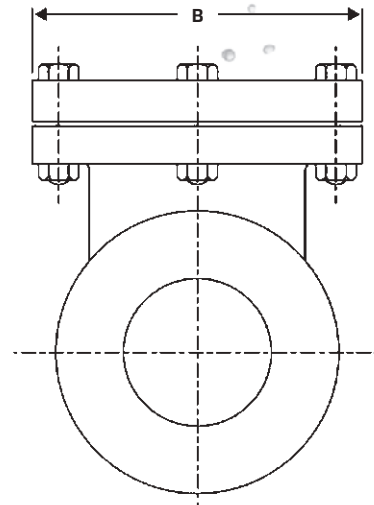
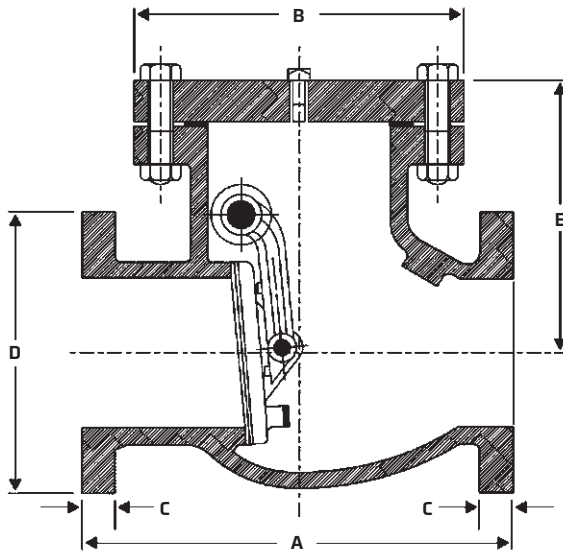
The table below indicates head loss in kPa across right pattern swing check valves mounted in horizontal pipelines, with door shafts supported in low friction bearings and without counterweight or other damping devices affecting movement of the doors. Head loss is indicated at various fluid velocities through the valves of clean water at 200 °C. The minimum head loss across the valves required to hold the doors in the open position averages 3.5 kPa in all sizes.

HEAD LOSS IN kPa

SIZE	NO OF DOORS	AT 2 M/S	AT 2.5 M/S	AT 3.0 M/S	AT 3.5 M/S
50	1	4.4	7.0	10.0	13.5
80	1	4.4	7.0	10.0	13.5
100	1	4.4	7.0	10.0	13.5
150	1	4.4	7.0	10.0	13.5
200	1	4.4	7.0	10.0	13.5
250	1	4.4	7.0	10.0	13.5
300	1	4.2	6.6	9.5	13.5

All valves are manufactured at our works.

SWING CHECK VALVES



50 - 300mm
1,0/1,6/2,5 & 4,0 Mpa

DIMENSIONS (IN mm)

SIZE	1.0/1.6/2.5 MPa SERIES						4.0 MPa SERIES					
	A	B	C	D	E	MASS KG	A	B	C	D	E	MASS KG
50	230	172	20	165	115	16	230	172	20	165	140	19
80	305	229	22	200	195	30	305	229	24	200	195	36
100	355	247	24	220	210	45	355	240	24	235	210	54
125	410	318	26	250	245	65	-	-	-	-	-	-
150	445	343	26	285	264	66	450	343	28	300	264	125
200	535	420	30	340	318	131	535	420	34	375	298	180
250	635	461	32	405	356	226	635	480	38	450	356	290
300	760	521	32	460	400	303	760	495	42	515	380	400